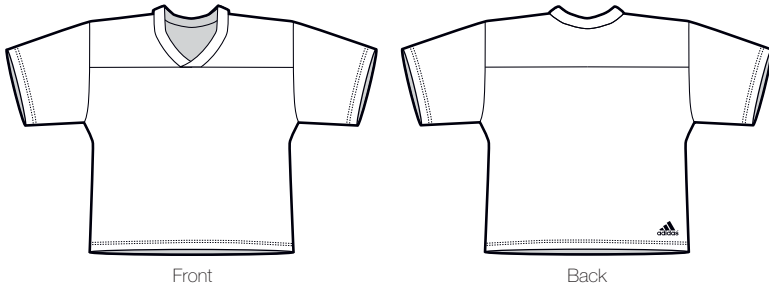


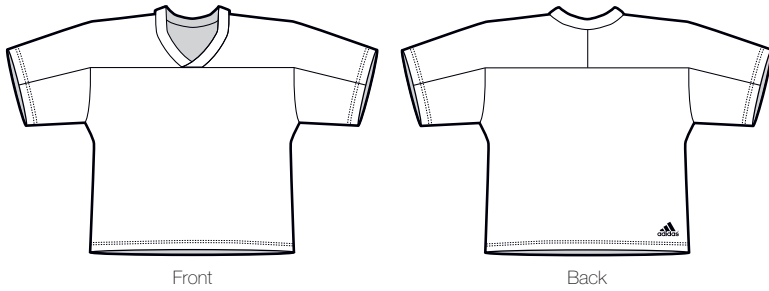
MEN'S JERSEY STYLES

SIZES/DESCRIPTIONS



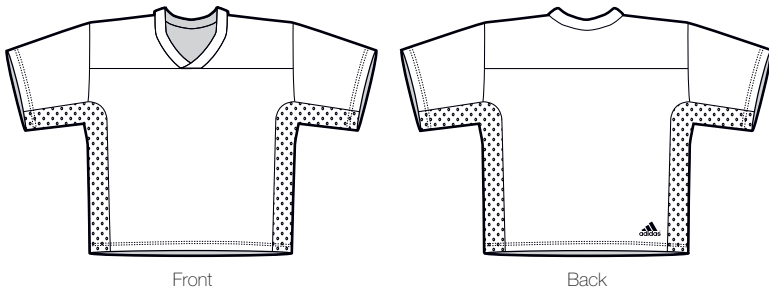
SFL10

- MEN'S: S – 2XL
- Square yoke
 - Knit v-neck and hemmed sleeves



SFL20

- MEN'S: S – 2XL
- Extended yoke
 - Knit v-neck and hemmed sleeves



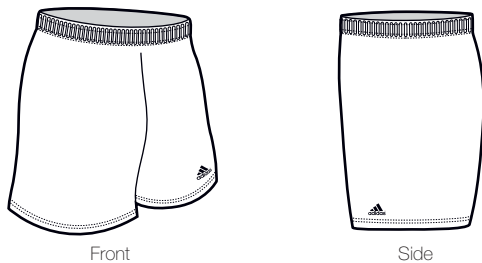
SFL30

- MEN'S: S – 2XL
- Square yoke
 - Knit v-neck and hemmed sleeves
 - Non-sublimated, solid colour 100% polyester porthole mesh inserts (40 cloth- see colours below)

AVAILABLE MESH INSERT COLOURS (40 Cloth)



MEN'S SHORT STYLES



SFL80

- MEN'S: S – 2XL
- 7" inseam
 - Elastic waist with drawstring
 - Available in double layer (additional charges apply)

Available Jersey Body Fabrics:
50, 63, 67, 69, 82

Available Sleeve & Yoke Fabrics:
50, 63, 67, 69, 82

Available Short Fabrics:
50, 63, 67, 69, 70

Note: Not all styles are available in all designs. See styles available for each design.

Available Neck Trims:
See Page 228

SEE PAGE 227 FOR ALL FABRIC DESCRIPTIONS | SEE PAGE 229 FOR HOW TO ORDER



Front

Back

Jersey Shown is SFL30

Jersey Colour Break 1 2 3 4 | - Indicates Inserts

Short Colour Break 1 2

Design A001

Jersey Styles Available

All Styles

Fonts Used:

Name – 1052

Number – 1009



Front

Back

Jersey Shown is SFL10

Jersey Colour Break 1 2

Short Colour Break 1 2

Design A002

Jersey Styles Available

All Styles

Fonts Used:

Name – 1035

Number – 1035



Front

Back

Jersey Shown is SFL10

Jersey Colour Break 1 2 3

Short Colour Break 1 2 3

Design A003

Jersey Styles Available

SFL 10

SFL 30

Fonts Used:

Name – LOGO

Number – 1005



Front

Back

Jersey Shown is SFL20

Jersey Colour Break 1 2 3

Short Colour Break 1 2

Design A007

Jersey Styles Available

SFL 20

Fonts Used:

Name – LOGO

Number – 1001



Front

Back

Jersey Shown is SFL30

Jersey Colour Break 1 2 1 | - Indicates Inserts Short Colour Break 1 2

Design A012

Jersey Styles Available

- SFL 10
- SFL 30

Fonts Used:

- Name – 1028
- Number – 1028
- Logo – EAGLE7



Front

Back

Jersey Shown is SFL10

Jersey Colour Break 1 2 Short Colour Break 1 2

Design A013

Jersey Styles Available

- All Styles

Fonts Used:

- Name – N/A
- Number – 1044
- Logo – BANDIT4



Front

Back

Jersey Shown is SFL30

Jersey Colour Break 1 2 1 | - Indicates Inserts Short Colour Break 1 2

Design A014

Jersey Styles Available

- All Styles

Fonts Used:

- Name – LOGO
- Number – 1035
- Logo – n/a



Front

Back

Jersey Shown is SFL20

Jersey Colour Break 1 2 3 Short Colour Break 1 2

Design A015

Jersey Styles Available

- SFL 20

Fonts Used:

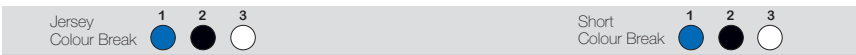
- Name – 1047
- Number – 1047



Front

Back

Jersey Shown is SFL10



Design A016

Jersey Styles Available

- SFL 10
- SFL 30

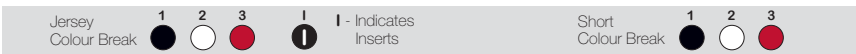
Fonts Used:
 Name – LOGO
 Number – 1009



Front

Back

Jersey Shown is SFL30



Design A017

Jersey Styles Available

- SFL 10
- SFL 30

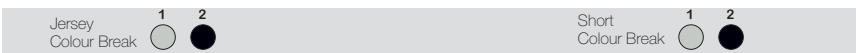
Fonts Used:
 Name – 1051
 Number – 1051



Front

Back

Jersey Shown is SFL10



Design A018

Jersey Styles Available

- SFL 10
- SFL 30

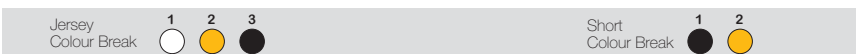
Fonts Used:
 Name – LOGO
 Number – 1049



Front

Back

Jersey Shown is SFL10



Design A019

Jersey Styles Available

- SFL10

Fonts Used:
 Name – Logo
 Number – 1009