

PRO FIT JERSEY & SHORT STYLES

SIZES/DESCRIPTIONS

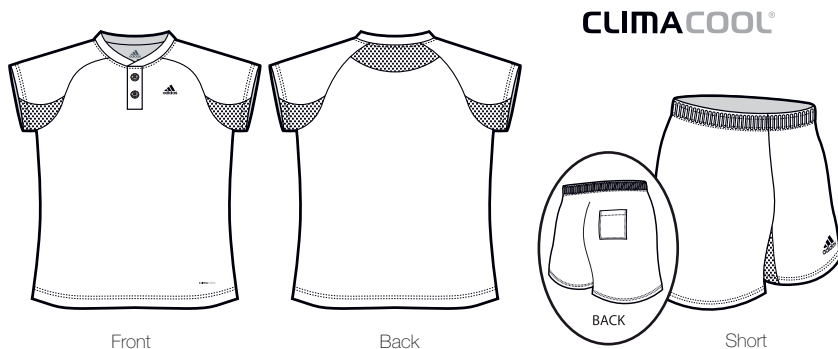


ABB85 WOMEN'S: XS – 3XL GIRL'S: S – XL

- Two button jersey with raglan sleeves
- Contoured cut
- Available fabrics as per below with 100% polyester mesh inserts (19 cloth)

ABB95 WOMEN'S: XS – 3XL GIRL'S: S – XL

- Elastic waist with drawstring
- 5" inseam
- Coverseam stitching on front & back rise
- Set-in back pocket
- Available fabrics as per below with 100% polyester mesh inserts (19 cloth)

BASIC FIT JERSEY & SHORT STYLES

SIZES/DESCRIPTIONS

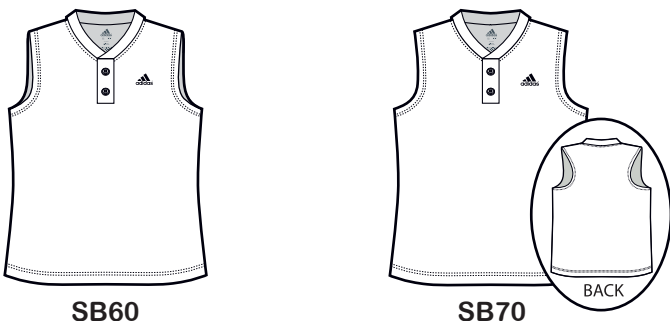


SB65 WOMEN'S: XS – 3XL GIRL'S: S – XL

- Crossover knit v-neck sleeveless jersey

SB66 WOMEN'S: XS – 3XL GIRL'S: S – XL

- Crossover knit v-neck racerback sleeveless jersey

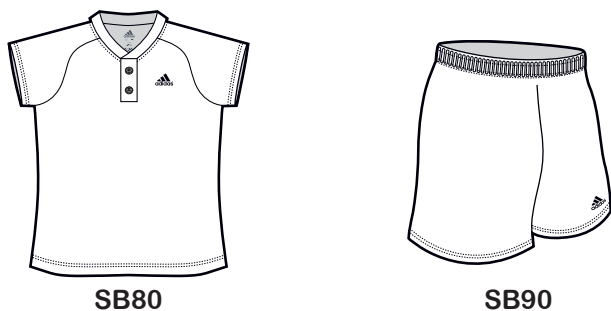


SB60 WOMEN'S: XS – 3XL GIRL'S: S – XL

- Two button sleeveless jersey
- Contoured cut for a more form fitting jersey

SB70 WOMEN'S: XS – 3XL GIRL'S: S – XL

- Two button sleeveless racerback jersey
- Contoured cut for a more form fitting jersey



SB80 WOMEN'S: XS – 3XL GIRL'S: S – XL

- Two button jersey with raglan cap sleeves
- Contoured cut for a more form fitting jersey

SB90 WOMEN'S: XS – 3XL GIRL'S: S – XL

- Elastic waist with drawstring
- 5" inseam
- Optional patch pocket available

Available Fabrics
45**, 47*, 67, 68, 69

*additional charges apply
**fabric not available for shorts.

Note: Not all styles are available in all designs. See styles available for each design.

Available Neck Trims:
See page 228
Only available on SB65, SB66

SEE PAGE 227 FOR ALL FABRIC DESCRIPTIONS | SEE PAGE 229 FOR HOW TO ORDER



Front



Back



Jersey Shown is SB65

Jersey Colour Break 1 2 3

Short Colour Break 1 2 3

Design A001

Styles Available

- SB 60
- SB 65
- SB90

Fonts Used:

Name – 1004 / 1005
 Number – 1005



Front



Back



Jersey Shown is SB60

Jersey Colour Break 1 2 3

Short Colour Break 1 2 3

Design A002

Styles Available

- SB 60
- SB 65
- SB90

Fonts Used:

Name – 1035
 Number – 1035



Front



Back



Jersey Shown is ABB85

Short Shown is ABB95

Jersey Colour Break 1 2 3

Short Colour Break 1 2 3

Design A003

Styles Available

- SB 80
- ABB85
- SB90
- ABB95

Fonts Used:

Name – LOGO
 Number – 1038



Front



Back



Jersey Shown is SB60

Jersey Colour Break 1 2 3

Short Colour Break 1 2 3

Design A004

Styles Available

- SB 60
- SB 65
- SB 66
- SB 70
- SB90

Fonts Used:

Name – 1052
 Number – 1001



Front



Back



Short Shown is ABB95

Jersey Shown is ABB85

Note: Logo is not part of jersey design and can be changed or removed.

Jersey Colour Break 1 2

Short Colour Break 1 2

Design A006

Styles Available

All Styles

Fonts Used:

Name – 1004 / 1001

Number – 1007

Logo - BEAR1



Front



Back



Jersey Shown is SB60

Jersey Colour Break 1 2 3

Short Colour Break 1 2

Design A007

Styles Available

SB 60

SB 65

SB90

Fonts Used:

Name – LOGO

Number – 1001



Front



Back



Jersey Shown is SB65

Jersey Colour Break 1 2 3

Short Colour Break 1 2

Design A008

Styles Available

SB 60

SB 65

SB90

Fonts Used:

Name – LOGO

Number – 1001



Front



Back



Short Shown is ABB95

Jersey Shown is ABB85

Jersey Colour Break 1 2 3

Short Colour Break 1 2 3

Design A009

Styles Available

All Styles

Fonts Used:

Name – 1004

Number – 1038



Front

Back

Jersey Shown is ABB85

Short Shown is ABB95



Design A010

Styles Available

SB 80
ABB85

SB90
ABB95

Fonts Used:

Name – 1004
Number – 1034



Front

Back

Jersey Shown is ABB85

Short Shown is ABB95



Design A011

Styles Available

SB 60
SB 65
SB 80
ABB85

SB90
ABB95

Fonts Used:

Name – LOGO
Number – 1027
Logo – PANTHER2



Front

Back

Jersey Shown is SB66



Design A013

Styles Available

SB 60
SB 65
SB 66
SB 70

SB90

Fonts Used:

Name – 1052 / 1001
Number – 1001
Logo – HUSKY1



Front

Back

Jersey Shown is ABB85

Short Shown is ABB95



Design A014

Styles Available

SB 80
ABB85

SB90
ABB95

Fonts Used:

Name – 1052
Number – 1050
Logo – PANTHER1